

Workshops and events

We run a number of workshops and events throughout the year to help you manage your money. Visit www.port.ac.uk/money for dates, times and venues.

Examples of the events we run include:

- **Loaded** – a week of events around campus designed to help you save and manage your money. Each day has a different theme, from food to housing, careers and healthy living.
- **Poundstretchers** – a quick and informal workshop, looking at common pitfalls of student spending. We will show you ways to make your money go further and how to plan a realistic budget.
- **Students with children** – a drop-in session delivered by our Student Financial Adviser outlining the additional financial support that is available to students with children, including benefits and tax credits. These run in the summer term to help you make sure you're getting all the support you're entitled to during the year and over the summer break.
- **Final-year workshop** – an essential workshop for all final-year students to help you prepare for when you leave university. Topics include paying back your student loan, graduate salaries and postgraduate study.
- **Student Finance England re-application workshops** – these sessions run throughout the spring and summer to help you re-apply for next year's funding.

Other leaflets we produce

- Funding at your fingertips
- Funding for your first year: what you need to know
- Funding for 2012/13: Frequently Asked Questions
- Funding for undergraduates with dependants
- Funding for students in financial hardship
- Funding for students with a disability
- Funding for full-time EU and international students
- Funding for part-time courses
- Funding for postgraduate study
- Funding for NHS and social work courses
- Funding for care leavers and residents of Foyer Federations and sheltered accommodation

Useful contacts



Student Finance England

T: 0845 300 50 90

W: www.direct.gov.uk/studentfinance

University of Portsmouth Finance Department (for queries about tuition fee payments)

T: 023 9284 5533

W: www.port.ac.uk/tuitionfees

University of Portsmouth Academic Registry (for queries about bursary payments)

T: 023 9284 3429/3451

E: bursary@port.ac.uk

W: www.port.ac.uk/bursaries

Our commitment

It is our aim to provide comprehensive support to current and prospective students and parents in the form of information, advice and guidance, and additional funds where appropriate. In doing this we hope to enable the successful completion of their studies, improve their financial capability and literacy, and enhance the quality of the student experience. We provide a wide range of services and offer free, non-judgemental and confidential guidance on money-related issues.

If this document is in a format not accessible to you, please email corporate.communications@port.ac.uk.

Information correct at time of print (January 2012).

University of Portsmouth
Student Finance Centre
Nuffield Centre, St Michael's Road
Portsmouth, PO1 2ED

T: 023 9284 3014

T: 023 9284 3052 (Fees and bursary helpline)

F: 023 9284 3344

E: student.finance@port.ac.uk

W: www.port.ac.uk/money

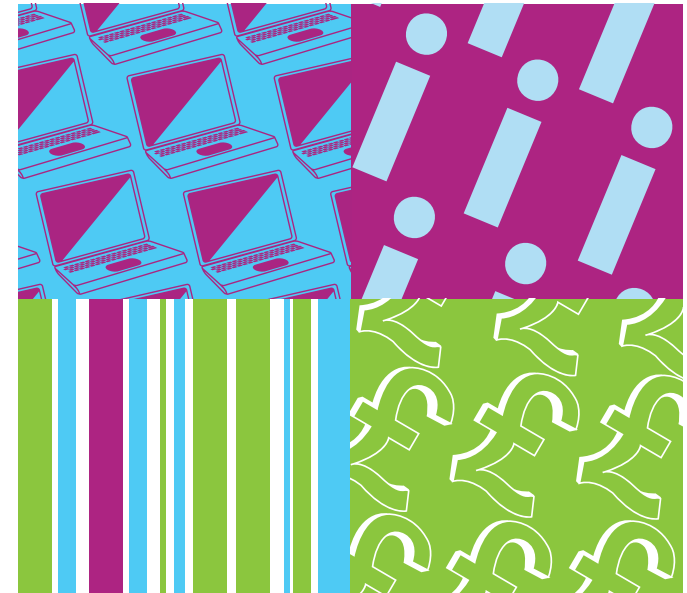
Opening times

Monday, Wednesday and Thursday: 8.25am–5pm

Tuesday: 9.30am–5pm Friday: 8.25am–4pm

Funding for 2012/13: an introduction to the Student Finance Centre

2012/13
Finance essentials



Inside who we are

• what we do • how
we can help you



Student Finance
Centre

The University of Portsmouth has its own Student Finance Centre to help you successfully manage your finances as a student. We provide a range of finance related services, which can be split into two main areas of work: information, advice and guidance; and the administration of hardship funds.

Information, advice and guidance

We are proud to have achieved the matrix standard in 2009, which is a quality framework for the delivery of information, advice and guidance. Our team of experienced, qualified and dedicated staff can support you through the provision of:

- funding information about living cost loans, living cost grants, bursaries and tuition fee loans
- money management advice
- advice about state benefits and tax credit entitlement
- a range of workshops and events to help you manage your finances
- a dedicated Student Finance Centre website
- liaison with Student Finance England

Everything you tell us is in confidence and we will always treat you with respect, won't judge you and will put your needs and interests first.

Administration of hardship funds

If you are experiencing genuine financial hardship, please contact us. As well as assessing your situation, we'll ensure you are receiving all the support you are entitled to. You may be eligible to apply for a non-repayable grant from the following funds:

- Access to Learning Fund (ALF)
- The University of Portsmouth Student Support Fund (UoPSSF)
- International and EU Emergency Fund

These funds are only available to students who have already taken full advantage of the statutory support already available to them, for example the living cost loan (if applicable). Awards from these funds are means tested. This means we calculate your income and expenditure to see if there is a shortfall. Our leaflet *Funding for students in financial hardship* provides more information.

We are also the contact point for the following:

- Paul Burrell Fund (short-term loans)
- Rev Jackie Mew Memorial Fund (short-term loans)
- Care Leavers and Foyer Residents Bursary
- Bentley Young Persons Trust
- CertHE Dental Nursing Bursaries
- Leverhulme Trust

The Student Finance Centre

The Student Finance Centre is on the second floor of the Nuffield Centre and is open five days a week all year (except Christmas). For opening times and contact information, see the back page. A member of staff is always available to help, so you can drop in whenever you need to – there is no need to make an appointment. If you would prefer, you can talk with a member of staff in a more confidential setting – just let us know when you come to the Centre.

What you told us

Our recent customer satisfaction survey told us that 95 per cent of students rated our customer service as excellent or good.

Here's what some previous students have said:

Amy McDonald BSc (Hons) Psychology

'The Student Finance Centre was able to help me get through my financial difficulties by offering free advice, calling Student Finance England on my behalf, providing access to the hardship funds and holding free workshops on how to manage my money better. A very approachable and friendly team! To be honest, without their support I probably would not have been able to continue my studies!'

Blessing Rufaro FdSc Creative Technologies and Enterprise

'The Student Finance Centre has been a blessing, especially when I desperately needed help. Because I'm a dad and I work part time, there are months when I experience financial difficulties. I would like to praise them for doing a wonderful job.'

Rudo B Harahwa LLB Law

'I found the staff in the Student Finance Centre extremely helpful. They not only gave me very helpful advice, but also acted as my advocates, making sure that all my information was up to date and letters dispatched as needed.'

