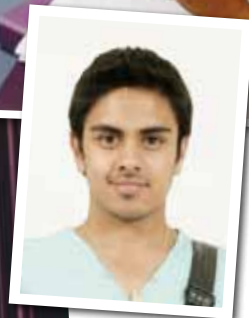


# Getting started at university

Essential info on what you need to do before  
you arrive and during your first week



# Before you arrive

## Accommodation – is your accommodation sorted?

If you have applied for accommodation, you will be contacted by our Student Housing team. If you have not sorted it yet or have any questions, do contact the team:

**T:** 023 9284 3214

**E:** [student.housing@port.ac.uk](mailto:student.housing@port.ac.uk)

**W:** [www.port.ac.uk/accommodation](http://www.port.ac.uk/accommodation)

## Complete and return your Campus Card Application Form.

This form is in your pack and the card will give you access to University facilities, so you'll want to make sure that you get it as soon as possible.

## Make arrangements to pay your tuition fee before you arrive.

You may have arranged a tuition fee loan from the Student Loans Company, you may have a sponsor or you may be paying yourself. If you haven't already made arrangements to pay your fee, or need advice or guidance on any aspect, do contact us:

**T:** 023 9284 5259

**E:** [tuition.fees@port.ac.uk](mailto:tuition.fees@port.ac.uk)

**W:** [www.port.ac.uk/tuitionfees](http://www.port.ac.uk/tuitionfees)

**Don't forget to bring proof of identity. You will need this to register on your course.**

**Bring with you evidence of your course entry qualifications, which you may be asked to produce.**

**Ouch! Make sure you've had your jabs for mumps and meningitis.**

**Don't forget you'll need a TV licence –**

even if you watch TV on your laptop.

Visit [www.tvlicensing.co.uk/noexcuse](http://www.tvlicensing.co.uk/noexcuse).

**Remember to bring your induction/registration card so you'll know where you are going on Monday morning.**

## Get your computer account details

Visit [www.port.ac.uk/studentaccount](http://www.port.ac.uk/studentaccount) to retrieve your university computer username and password, before arriving on campus. This will give you access to your Google email, student portal and other essential IT services.



# Your first week

## On Monday morning make your way to your course induction.

See your induction/registration card for details. Make sure you know where you need to be first thing Monday during induction week. Check it out on the map on the reverse of the induction/registration card.

**Collect your registration form from your course induction session** and take it with you to registration. Remember to keep your induction/registration card with you.

## After your course induction session, make your way to Nuffield Sports Hall to register on the allocated date and time, and pick up your campus card.

The date and time will be on your induction and registration card – stick to your session.

**Watch your budget!** Loans and grants are paid three to five days from the day you register (providing you applied before the deadline and have received your payment schedule). Make sure you have enough money to last you through the first fortnight. If your support is likely to be delayed for longer than this, contact the Student Finance Centre team:

**T:** 023 9284 3014

**E:** [student.finance@port.ac.uk](mailto:student.finance@port.ac.uk)

**W:** [www.port.ac.uk/money](http://www.port.ac.uk/money)

## Don't forget doctor and dentist.

Register with them as soon as possible: [www.port.ac.uk/health](http://www.port.ac.uk/health).

## Fun time!

Now get yourself to the Students' Union Freshers' Fayre in Ravelin Park for clubs, societies and to meet other students.

Keep an eye on [www.port.ac.uk/lookup](http://www.port.ac.uk/lookup) as soon as you arrive. This is your website and is full of useful information, news and events – all you'll need to know to settle in to university.

**We wish you an enjoyable start to life at the University of Portsmouth.**



# Information required for registration

When you register with the University, you will need to bring documentation to confirm your identity and you may need to provide evidence of your entry qualifications. This is an important part of registration.

1. For identity purposes, one of the following documents must be shown at the point of registration. These include:

- valid passport
- valid EU identity card
- UK driving licence
- UK birth certificate
- UK HM Forces identity card
- UK firearms licence

International students must show a valid passport.

2. For qualifications, students are required to provide on request original copies of qualification certificates as detailed in your offer.

Please note: Students who cannot provide proof of their identity by one of these means will not be registered. The University reserves the right to exclude any student that is unable to satisfactorily provide proof of qualifications obtained.

For more information on these arrangements, please visit [www.port.ac.uk/yourportsmouth](http://www.port.ac.uk/yourportsmouth).



# Other useful information

**Your Portsmouth** is a website aimed at everyone who has applied to the University of Portsmouth for entry in September 2011. We aim to provide you with information about your application, your housing arrangements, money matters and more, all at the times when you need them most. You can also post questions and comments here and connect to University social networks such as Facebook via the site.

Keep up to date by visiting [www.port.ac.uk/yourportsmouth](http://www.port.ac.uk/yourportsmouth).

## Dates to remember

Parents Welcome event	17 and 18 September
Induction week	19–23 September

## Term dates

Autumn term	Monday 19 September 2011–Friday 16 December 2011
Spring term	Monday 9 January 2012–Friday 30 March 2012
Summer term	Monday 23 April 2012–Friday 1 June 2012

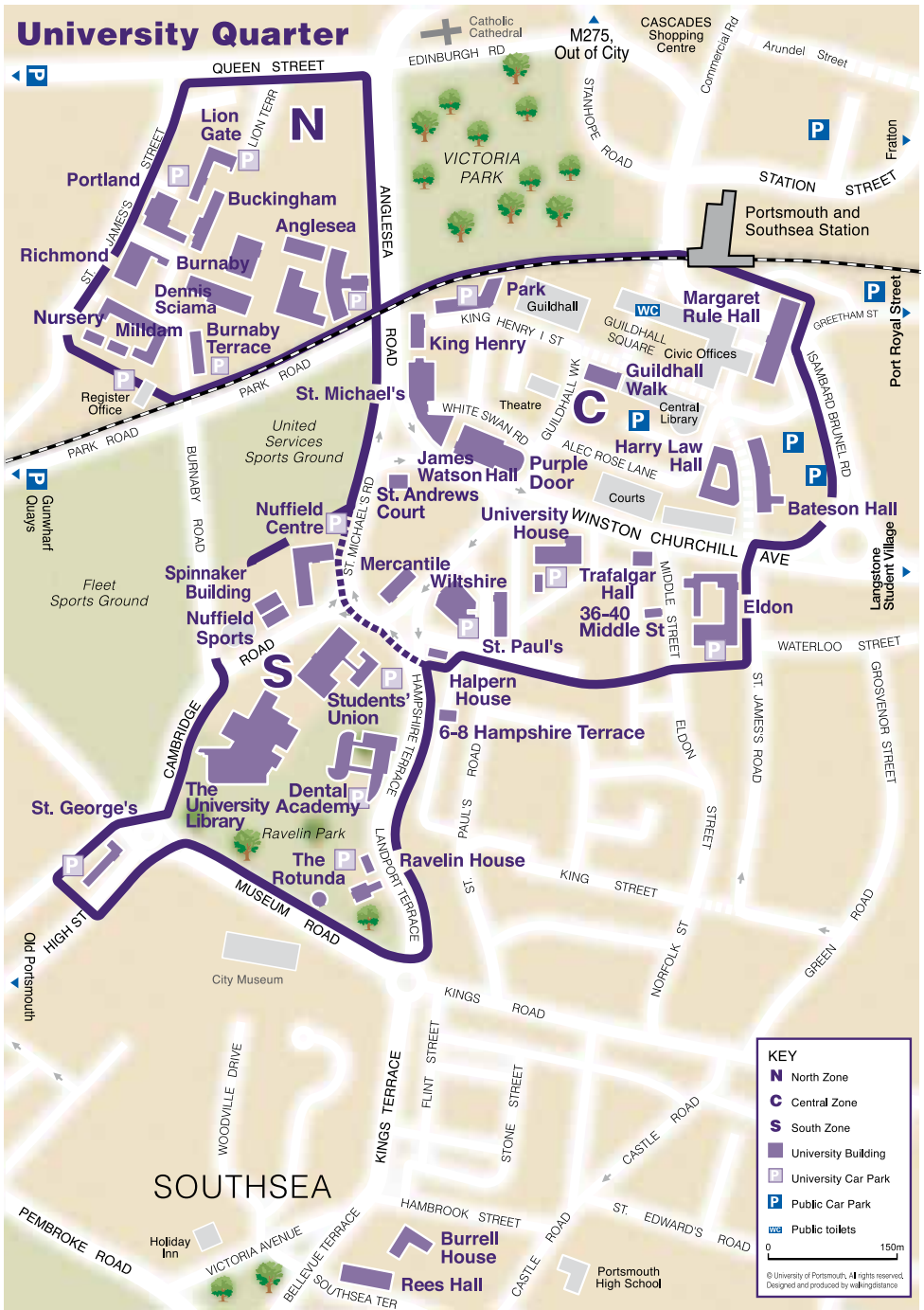
## Semester dates

Semester 1	Monday 26 September 2011–Friday 27 January 2012
Semester 2	Monday 30 January 2012–Friday 1 June 2012

## Useful contact numbers

Academic Registry .....	023 9284 3426
General enquiries .....	023 9284 8484
Information Centre .....	023 9284 4444
Student Advice Services .....	023 9284 3157
Student Finance.....	023 9284 3014
Student Housing .....	023 9284 3214
Students' Union .....	023 9284 3640

# University Quarter



**KEY**

- N** North Zone
- C** Central Zone
- S** South Zone
- University Building
- University Car Park
- Public Car Park
- Public toilets

0 150m

© University of Portsmouth. All rights reserved. Designed and produced by walkingdistance.