



UNIVERSITY OF
PORTSMOUTH

YOUR VIRTUAL OPEN DAY

Get comfortable. We're bringing Portsmouth to you. So, grab a cuppa, snacks, somewhere comfy to sit and join us for a taste of uni life.

Saturday 31 October, 10am-3pm



WE'RE LOOKING FORWARD TO SHOWING YOU ALL THAT PORTSMOUTH HAS TO OFFER.

Get ready to:

- Speak to academic teams and discover more about your course
- Get the inside scoop on life outside of study from our students
- Virtually tour the campus and halls
- Ask questions on applying, finance, housing and wellbeing
- Get support with your personal statement

Subject talks

These are called Webcasts. Here you can watch a presentation on your subject area of interest then join a typed live Question & Answer session to ask anything about these topics.

Life outside study

Our current students and graduates will be answering your queries about living and studying in Portsmouth. You can also join two Live Student Panel sessions at 12pm or 2pm. Why not start your day with a short HIIT workout in the morning and finish with a relaxation session at the end?

Tours

Running on-demand throughout the day you can take a tour of the city or our halls of residence and see where you could be living.

Information Fair

At Portsmouth you always have the support of our student services to help you with your finances, accommodation, career planning, and your health and wellbeing. Visit their booths to watch their presentations and ask your questions.

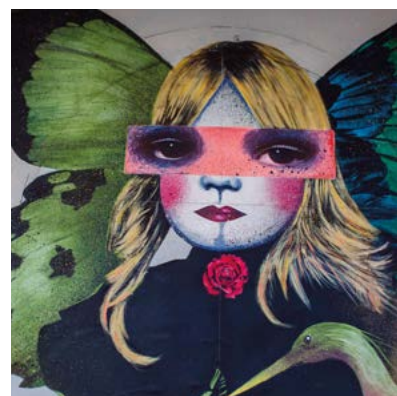
Agenda

On the top right of the open day home page click on the clock icon to create your own personal agenda. Add as many sessions as you want, and you will receive a reminder email 15 minutes before those sessions begin.

WHAT'S ON

THERE IS SO MUCH ABOUT PORTSMOUTH YOU'LL LOVE. TAKE A LOOK AT EVERYTHING YOU CAN DO AND PLAN YOUR DAY. SOME ACTIVITIES ARE RUNNING ON-DEMAND WHILST OTHERS ARE SCHEDULED THROUGHOUT THE DAY.

| ACTIVITY | WHEN IS THIS ACTIVITY AVAILABLE | WHERE DO I FIND THIS ACTIVITY |
|-------------------------------------|--|---|
| Vice-Chancellor Welcome talk | On-demand | From the Open Day homepage. |
| Subject talks (webcasts) | On-demand | From the Open Day homepage. Find the booth of the subject you're interested in and select the 'Webcast' icon to watch the talk. |
| Subject live Q&A | Scheduled throughout the day. See live Q&A schedule below. | From the relevant Subject booth. Found by clicking on 'Subject talks' from the Open Day homepage. |
| Information Fair | On-demand | From the Open Day homepage. |
| Personal Statement Support | On-demand | Drop in to the live chat to request a review of your personal statement. |
| Accommodation tours | On-demand | From the Open Day homepage. |
| Explore the city | On-demand | From the Open Day homepage. |
| Life Outside Study | On-demand | From the Open Day homepage. |
| Student Panel Discussion | Live: 12.00pm and 2.00pm | Click on the hotspot in Life Outside Study. |
| HIIT workouts | Live: 10.20am and 10.40am | Click on the hotspot in Life Outside Study. |
| Relaxation session | Live: 2.50pm | Click on the hotspot in Life Outside Study. |



SUBJECT-SPECIFIC TYPED LIVE CHAT SESSIONS

SATURDAY 31 OCTOBER SCHEDULE

| Q&A start time | Faculty of Creative and Cultural Industries | Faculty of Technology | Faculty of Humanities and Social Sciences | Faculty of Science and Health | Faculty of Business and Law |
|----------------|---|---|---|--------------------------------------|--|
| 11.00am | Animation | Building Surveying, Property Development and Quantity Surveying | English Language | Biological Sciences | Accounting and Finance |
| | Photography | | English Literature | | Business HND |
| 11.30am | Computer Games and VR | Product Design | Criminology | Operating Department Practice | Business and Human Resource Management |
| | Television and Broadcasting | | | | |
| 12.00pm | Creative Computing | Civil Engineering and Construction Engineering Management | History | Geography and Environmental Sciences | Business and Management |
| | Fashion | | | Geological Sciences | |
| 12.30pm | Creative Writing | Electronic Engineering | International Development | Nursing | Business and Supply Chain Management |
| | Creative and Digital Media | Electrical and Renewable Energy Engineering | | Radiography | |
| 1.00pm | Graphic Design | Mechanical Engineering | Childhood Studies | Psychology | Economics |
| | Film Production | | | | |
| 1.30pm | Film and Media | Mathematics | Languages | Social Work | Law |
| | Illustration | Physics | Sociology | Sport Science | Business Management and Entrepreneurship |
| 2.00pm | Architecture | Computing | International Relations and Politics | Dental Hygiene, Therapy and Nursing | International Business |
| | Journalism | | | Pharmacy and Biomedical Sciences | Marketing |
| | Media and Communication | | | | |
| 2.30pm | Music Technology | Innovation Engineering | | Paramedic Science | |
| | Performing Arts | | | | |

CONTACT DETAILS

Check out our **top tips** for preparing for the Virtual Open Day.
If you have any other questions before the day please get in touch:
opendays@port.ac.uk



Privacy notice

We will be recording the group activities during the event, so visitors can access all the resources afterwards. Rest assured, the recording won't include any personal details that can be used to identify visitors.

